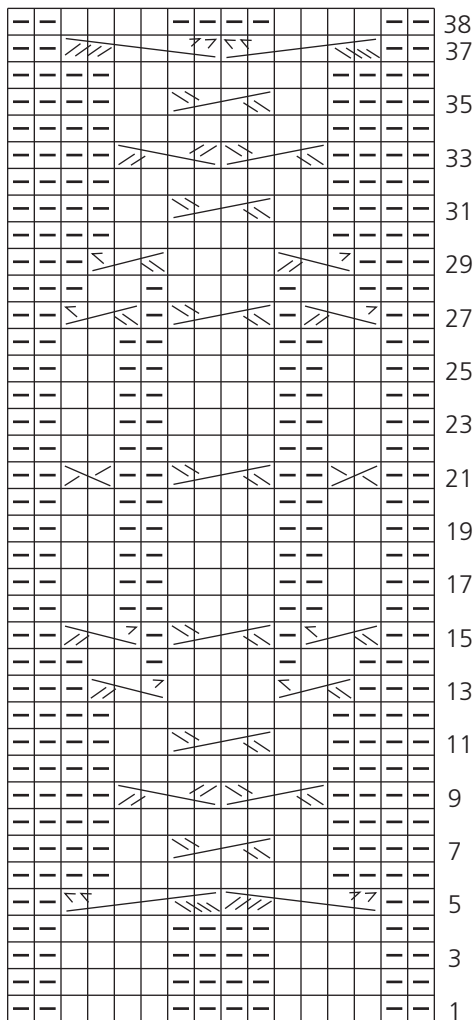


CHART 2



16 sts

STITCH KEY

 k on RS, p on WS

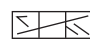
 p on RS, k on WS


 RT

 LT

 3-st RC

 3-st LC


 3-st RPC

 3-st LPC

 4-st RC

 4-st LC

 6-st RPC

 6-st LPC

60 Quick Luxury Knits

#36 Cable Cuff Mittens REVISED CHART 2